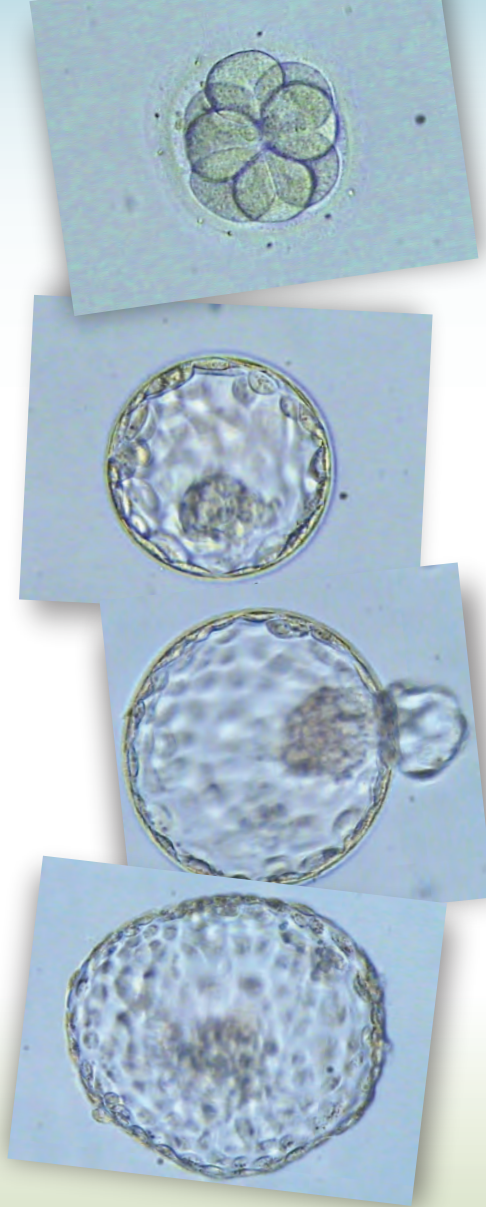


We work with Physicians to help couples become parents

Our mission is to help the creation of life. We recognize and respect the dreams and special needs of fertility patients in creating a new life and becoming a family.

We are a highly specialized high complexity clinical fertility laboratory offering immunological and genetic tests that are not available in general laboratories, in addition to general laboratory work ups. We offer specialized fertility tests and procedures to help physicians assist their infertility patients in achieving their goal of building a family.

WWW.FCLAB.US



**Fertility & Cryogenics
Lab**

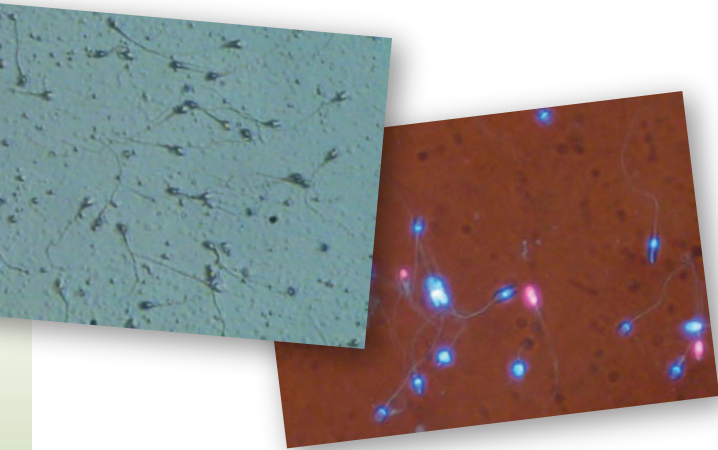
Sperm DNA Fragmentation

8635 Lemont Road
Downers Grove, IL 60516
Phone: (630) 427-0300
Fax: (630) 427-0302
www.fclab.us
info@fclab.us

Sperm DNA Fragmentation

The sperm has two important parts. A DNA load which is the men's contribution to the offspring, and a delivery mechanism which is the neck of the sperm and the propelling tail, designed to deliver the DNA into the egg.

The Sperm DNA is the man's contribution to the creation of a baby. Some infertile or sub-fertile men have fragmentation of the DNA in the sperm causing severely decreased fertility. These DNA defects affect primarily sperm function often in the face of normal semen parameters (count and motility.)



Regular Semen Analysis evaluates only the delivery mechanism, and only detection of Sperm DNA Fragmentation can assess the DNA load and its ability to actually fertilize and achieve a pregnancy.

We now offer Sperm DNA Fragmentation (SDF) assay, a highly specific test to identify these DNA defects.

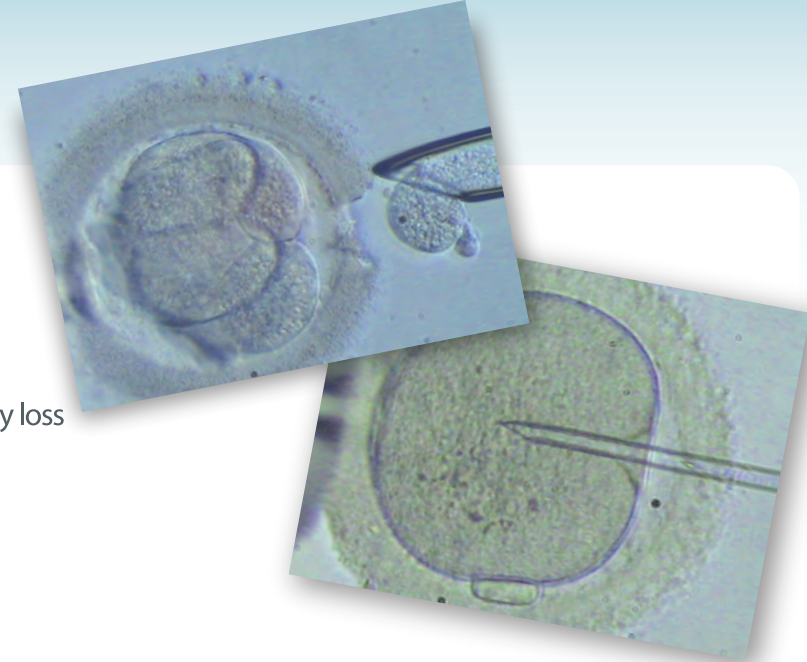
Who should be tested?

1. Unexplained Fertility
2. Poor fertilization in IVF cases
3. Poor embryo quality in IVF cases
4. History of repeated chemical pregnancy loss
5. History of IVF failure
6. History of recurrent miscarriages
7. Any couple that is contemplating fertility treatment should be evaluated for Sperm DNA Fragmentation.

Why should you be tested?

Men who have DNA defects are sub-fertile and have greatly reduced chance of achieving pregnancy either by regular intercourse or intrauterine insemination. Modern life styles like drinking coffee, alcohol, smoking, hot tubs, exposure to chemicals, exposure to electromagnetic waves, tight underwear etc. may induce Sperm DNA Fragmentation. Refraining from such habits or activities together with food supplementation reduces this process dramatically.

Performing SDF early in the fertility evaluation could potentially save a lot of time and minimize expenditure on treatment with minimal chance of success. This test is especially important for patients that have any kind of sperm abnormality such as low volume, low count, high ratio of abnormal sperm. In Sweden, for example, this test is mandatory prior to initiation of fertility treatments.



How is it done?

Normal sperm have double stranded DNA. The sperm cells are dyed with a special stain that emits red fluorescence with single stranded (fragmented) DNA and green fluorescence with double stranded (normal) DNA. Five thousand stained sperm cells are evaluated by a flow-cytometer and the percentage of abnormal sperm emitting red fluorescence is established

How can I get tested?

You may produce the sample at home and drop it at our facility within 4 hours without exposing to extreme temperature, you may produce in our facility, your fertility facility or you may call us and we shall mail you a kit to be returned by FedEx overnight. The sample should be returned frozen at -80C or more in dry ice or liquid nitrogen (provided by us)