

Y Chromosome Micro-deletion

This test is done for patients who have very few (oligozoospermia) or no (azoospermia) sperm present in a semen sample and do not have any type of obstruction. This test identifies small missing segments of DNA from specific genes located on the Y chromosome. These missing genes are important for spermatogenesis and spermiogenesis.

There are 3 basic deletions:

1. AZFa is rare and the most severe. There is no chance of being able to produce sperm.
2. AZFb there have been no documented cases of finding mature sperm with surgical procedures.
3. AZFc is the most common deletion. Successful procedures occurs in more than half of cases.

We test for 20 loci of deletion on the Y chromosome

Indications

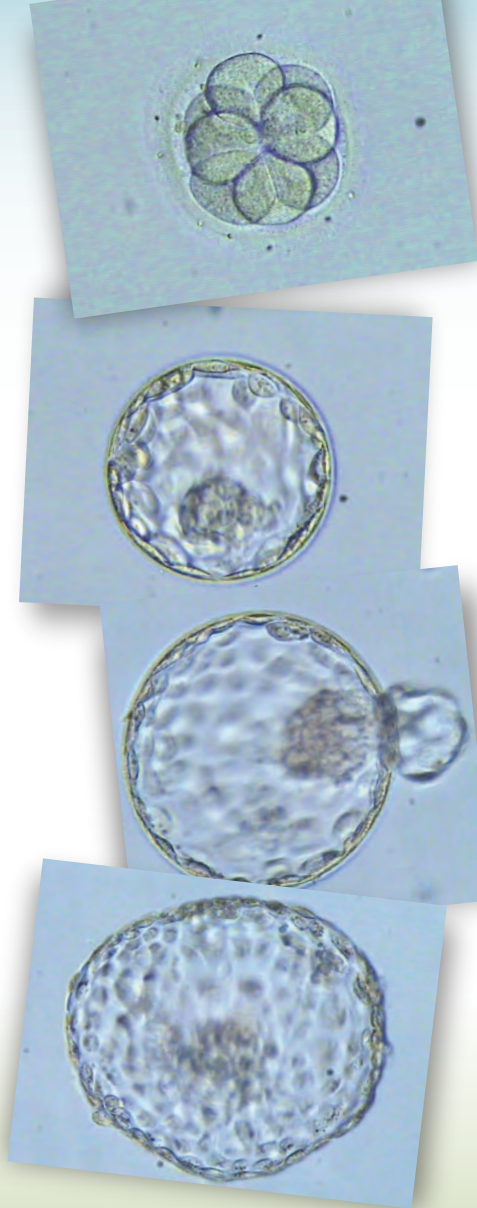
- Patients with low or no sperm in the ejaculate
- To check the possibility of finding sperm in testicular or epididymal aspiration
- To exclude obstructive azoospermia

Method

A special swab is used to collect cells from the inner cheek and shipped at room temperature to the lab. We extract the DNA and multiply it by Polymerase Chain Reaction (PCR) and check for any missing parts of the Y chromosome (micro-deletions)

How to start?

1. Contact your physician to obtain a lab requisition form.
2. Call FCLAB at (630) 427-0300 to schedule mailing a collection kit to your home.
3. Follow the instructions and mail back the kit to the lab
4. Results shall be mailed to your physician in 7-10 business days.



WWW.FCLAB.US



**Fertility & Cryogenics
Lab**

Andrology

8635 Lemont Road
Downers Grove, IL 60516
Phone: (630) 427-0300
Fax: (630) 427-0302
www.fclab.us
info@fclab.us

Sperm Freeze

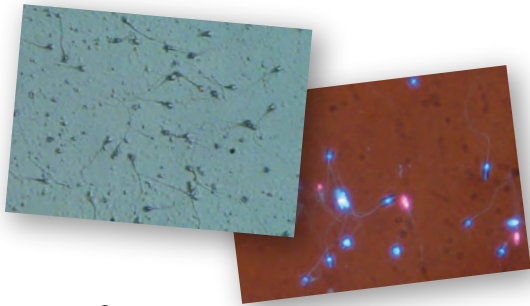
This is a procedure done to preserve the sperm for future usage for men at risk of losing their fertility.

Indications:

- Cancer patients who would undergo chemotherapy that might reduce their fertility.
- Men who are undergoing vasectomy.
- Some professions exposed to chemicals or radiation
- Athletes at risk of multiple trauma to testes like rodeo players

Method

The motile sperm are separated from the immotile sperm and during this process the seminal plasma is removed. The motile sperm soaked in a cryoprotectant and gradually cooled at a controlled rate to prevent damage to the cellular structure. The frozen sperm are then stored at -196°C for many years. The frozen sample are then ready for insemination as the seminal plasma was removed during processing thus eliminating the prostaglandins that causes uterine cramps when introduced in the uterine cavity.



How to start?

1. Contact your physician to obtain a lab requisition form.
2. Call FCLAB at (630) 427-0300 to schedule an appointment.
3. For best results abstinence for 2-3 days is required
4. Semen production can be done at our location, or at home if the sample can be dropped off within one hour of production.
5. Multiple freezes are recommended to increase the possibilities of fertilization when needed in the future.

Intra Uterine Insemination

- Sperm Wash
- Retrograde Sperm Wash

A procedure done to overcome hostile cervical mucus.

Indications:

This procedure helps couples when the woman has cervix problems that prevent healthy sperm from swimming through the cervix into the uterine cavity provided she has healthy fallopian tubes and normal ovulation.

Method

The ejaculate is collected in a sterile container, the semen is then processed to concentrate and segregate the motile sperm from the immotile sperm, and to remove the seminal plasma. The motile sperm are suspended in culture medium to be used for Intrauterine Insemination (IUI). The seminal plasma was removed during processing thus eliminating the prostaglandins that causes uterine cramps when introduced in the uterine cavity.

How to start?

1. Contact your physician to obtain a lab requisition form.
2. Call FCLAB at (630) 427-0300 to schedule an appointment.
3. For best results abstinence for 2-3 days is required.
4. On the day of ovulation contact your physician's office to schedule an appointment for the insemination. Then contact FCLAB to schedule the procedure 2 hours before the OB/GYN appointment.
5. Semen production can be done at our location, or at home if the sample can be dropped off within one hour of production.
6. When we receive the sample we shall process it and give it to the couple in a special container together with the inseminator.
7. The couple goes to their OB/GYN to have the woman inseminated.
8. We recommend two inseminations for best results - one on the day of ovulation and one the next day.

Comprehensive Semen Analysis

This test is done for the male partner of any couple who did not achieve pregnancy after one year of unprotected sex, and post vasectomy to confirm the absence of sperm in the ejaculate. There are three basic classifications.

- Comprehensive Semen Analysis
- Retrograde Semen Analysis
- Post Vasectomy Semen Analysis

Indications:

Fertility evaluation of the male partner

Method:

A simple test done by examining the ejaculate under the microscope for assessment of its macro and micro characteristics. Macro analysis is to measure the volume of semen, color, pH, time for liquefaction. Microanalysis is to measure approximate number per ml (sperm concentration) and total count in the ejaculate, morphology (shape of the sperm), percentage and quality of the motile sperm.

Presence of white blood cells is indicative of infection. Very low sperm count may indicate Y chromosome micro-deletion, poor morphology or low/sluggish motility needs more investigations for the causes like Sperm DNA fragmentation

How to start?

1. Contact your physician to obtain a lab requisition form.
2. Call FCLab at (630) 427-0300 to schedule an appointment.
3. For best results abstinence for 2-3 days is required.
4. Semen production can be done at our location, or at home if the sample can be dropped off within one hour of production.
5. Results shall be mailed to your physician in 7-10 business days.

